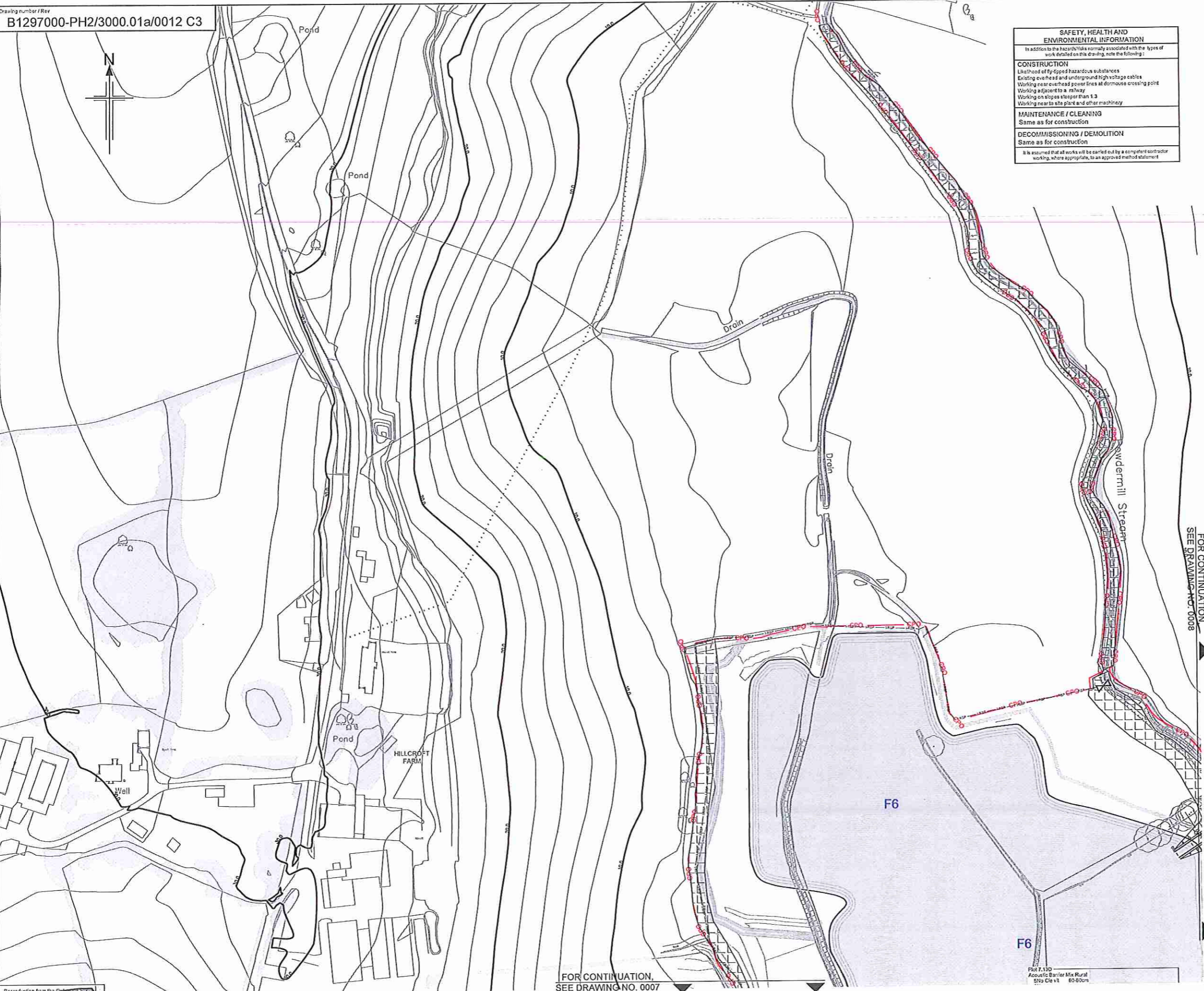


Drawing number / Rev  
B1297000-PH2/3000.01a/0012 C3



**SAFETY, HEALTH AND ENVIRONMENTAL INFORMATION**

In addition to the hazards/risks normally associated with the types of work detailed on this drawing, note the following:

**CONSTRUCTION**  
 Use of flammable hazardous substances  
 Existing overhead and underground high voltage cables  
 Working near overhead power lines at dormouse crossing point  
 Working adjacent to a railway  
 Working on slopes steeper than 1:3  
 Working near to site plant and other machinery

**MAINTENANCE / CLEANING**  
 Same as for construction

**DECOMMISSIONING / DEMOLITION**  
 Same as for construction

It is assumed that all works will be carried out by a competent contractor working, where appropriate, to an approved method statement

**NOTES**

- All dimensions in metres unless otherwise stated.
- For complete fencing key, refer to fencing drawings.

**KEY**

- High Forest - Dry (Planting at 2m centres, random mix in groups of 3-5 of each species) (LE2.1 and LE2.4.1)
- High Forest - Dry (Planting at 2.5m centres, random mix in groups of 3-5 of each species) (LE2.1 and LE2.4.1)
- High Forest - Wet (Planting at 2m centres, random mix in groups of 3-5 of each species) (LE2.1 and LE2.4.1)
- High Forest - Wet (Planting at 2.5m centres, random mix in groups of 3-5 of each species) (LE2.1 and LE2.4.1)
- Dry Woodland Edge (8m wide, planting at approximately 1.2 - 1.5m centres in three staggered rows, random mix of 3-5 species (LE2.1 and LE2.4.1) Care must be taken not to plant in obvious or straight lines. Refer to plant spacing detail on drawing B1297000/3000.01a/0001
- Wet Woodland Edge (6m wide, planting at approximately 1.2 - 1.5m centres in three staggered rows, random mix of 3-5 species (LE2.1 and LE2.4.1) Care must be taken not to plant in obvious or straight lines. Refer to plant spacing detail on drawing B1297000/3000.01a/0001
- Scrub random mix in groups of 3-5 of each species (LE2.6)
- Wetland Scrub random mix in groups of 3-5 of each species (LE2.6)
- Existing Woodland to be managed (LE2.1.1)
- Existing Woodland Edge to be Managed (LE2.2)
- Scattered Trees in Wet Grassland, Marsh and Fen (LE4.1.1) Refer to plant spacing detail on drawing B1297000/3000.01a/0001
- Scattered Scrub in Neutral Grassland (LE6.1.3.1) Refer to plant spacing detail on drawing B1297000/3000.01a/0001
- Climbing plants on fences and structures - 6m linear spacing unless otherwise noted.
- Woodland/woodland edge Infill planting
- Amenity Tree and Shrub Planting (LE3.1)
- Extra heavy standard, semi-mature tree or multi-stem tree
- Site of Special Scientific Interest (SSSI)
- Site of Nature Conservation Importance (SNCI)
- Native Species Hedgerows (LE4.3) Two staggered rows, planted at 0.5m centres, 0.5m between rows
- Native Hedgerows with Trees (LE4.4) Two staggered rows, planted at 0.5m centres, 0.5m between rows. Trees shall be planted between rows at an average of 10m - 15m centres. Each tree shall be marked/identified with a pole as described in Appendix 30 & 1 Planting, Setting out, sub-section vii in Revision B (or later) of the Series 3000 Appendices.
- Ditch
- Watercourse
- Pond
- Public Footpath
- Byway
- Bridleway
- Existing trees, hedges & scrub to be retained
- Woodland management zones
- CPO boundary
- BF - EF - Bat fence
- CB - CB - 1.8m close boarded fence
- EP - EP - Post and wire fence with badger proofing.
- PAR - Timber post and four rail fence
- ASHB - 1.8m high absorptive noise barrier
- REH1 - 1.8 & 1.5m high reflective noise barriers
- E - Existing fence
- SP - SP - Stockproof fence

FOR CONTINUATION  
SEE DRAWING NO. 0008

FOR CONTINUATION,  
SEE DRAWING NO. 0007

C3	18/12/2015	Minor Planting Changes	LC	AS	AS	PDF
C2	11/08/2015	Plant Schedule Updated to Match Changes	CC	AS	TD	JP
C1	03/03/2015	Hedge shortened at flood retention pond	RM	AS	AS	JP
C0	28/07/2013	ISSUE FOR CONSTRUCTION	AS	RM	RM	AS
Rev	Rev. Date	Purpose of revision	Drawn	Checked	Rev'd	Apprv'd

**JACOBS**

Simpson House, 8 Cherry Orchard Road, Croydon, Surrey, CR3 6EE  
Tel: +44 (0)20 88 65 812 Fax: +44 (0) 208 681 240  
www.jacobs.com

Client	Employer

Project  
**BEXHILL TO HASTINGS LINK ROAD**

Drawing title  
**PLANTING SHEET 12 OF 14**

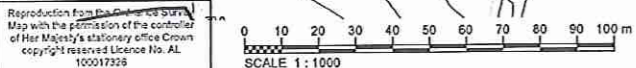
Drawing status  
**FOR CONSTRUCTION**

Scale: 1:1000 @ A1 DO NOT SCALE  
 Jacobs No. B1297000  
 Client no.

Drawing number  
**B1297000-PH2/3000.01a/0012** Rev  
**C3**

This drawing is not to be used in whole or part other than for the intended purpose and project as defined on this drawing. Refer to the contract for full terms and conditions.

P:\BTL\JOBS\B1297000 Bexhill Hastings\Phase 2 - Detailed Design\600 CAD\603 Drawings\3000 Landscapes & Ecology



11 JAN 2016  
10553